

CAMILLE O'SULLIVAN



Time Out

She treats every song as an intense emotional journey...hypnotic... such an outpouring of passion you can't resist being drawn into her web ★★★★★ Independent

Camille O'Sullivan enjoys a formidable international reputation for her dramatic interpretations of the songs of Brel, Cave, Waits, Bowie and more. Chameleon-like on stage, each song has a different character with its story to tell. The award-winning singer - one of the original cast members of the Olivier Award-winning *La Clique* - has stunned audiences around the world with 5-star sell-out performances, including **Sydney Opera House, London's Royal Festival Hall, 6 week London West End** run and a show-stealing appearance on *Later with Jools Holland* (BBC TV).



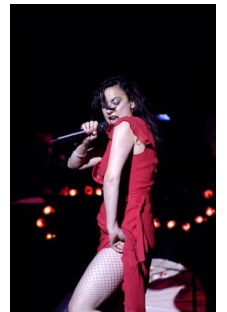
Ravishing, a superb performer and great singer... the star is her singing voice, a deep sultry instrument that might have been created to express desolate love



The Guardian

Dark, fierce, amusing and mesmerizing, Camille transforms each song into an intense theatrical experience, drawing her audience into a world illuminated by the dark and the light.

When she sings it's as though her breath is soaked in paraffin - one spark, and the whole room would ignite Daily Telegraph



Camille is a singer, actress, award-winning architect and painter. She was born in London to a French mother and Irish father, and grew up in Cork, Ireland, surrounded by music ranging from French chanson, Deep Purple and David Bowie to Led Zeppelin - a soundtrack which was her inspiration to become one of Ireland's most unique artists. As much a storyteller as a singer, Camille has made songs by Jacques Brel, Nick Cave and Tom Waits her own, with an inspirational fearlessness which is her hallmark.

Having studied fine art painting (she has exhibited at the Royal Hibernian Academy in Dublin), Camille went on to achieve a 1st Hons degree in Architecture and won the Architectural Association of Ireland Award in 2000. While working in Berlin, she discovered the rich narrative songs of Weimar's Hans Eisler and Kurt Weill, and music as a full-time career.

In the last six years she has built an international reputation for her live performances - in which "nothing is quite as it seems". In fact, one of the major factors in Camille's international success has been her audiences' total inability to pigeonhole her distinctive performances, making her one of the world's most accessible and yet enigmatic performers.



A cross between Sally Bowles, Patti Smith and P J Harvey... a major star ★★★★★ Scotsman

She has won several "Best of" Awards including at the Dublin, Brighton and Melbourne Festivals and a Spirit of the Fringe Award at Edinburgh Fringe, where she is regularly one of the top-selling performers. In Nov 2011 she was awarded Irish Tatler **Woman of the Year Music Award**.

Expect fire and ice, tears and laughter, pure passion and drop-dead cool. Expect to be transported to places and spaces of fear, love and wonder. Expect the unexpected!

Camille has released 4 CDs and 2 DVDs.

Her new studio album – *Changeling* - will be released in the UK in August 2012.

A courageous and singular performer, Camille is one of the most gifted interpreters of narrative songs yet to appear... ★★★★★ Irish Times



CAMILLE O'SULLIVAN

Camille is a marvellous ambassador for Irish artistic excellence on a global stage
Eugene Downes (CEO, Culture Ireland)

Film/TV

Mrs Henderson Presents (Dir: Stephen Frears); with Dame Judi Dench, Bob Hoskins, Will Young
Over the Edge, November Afternoon (Dir John Carney).
Regular guest on *The Late Late Show* (RTE TV) including performances with Shane MacGowan
Later... With Jools Holland (BBC2 TV)
Interviewed by **Sir David Frost** - Frost Over the World (Aljazeera English)

Radio Featured interviews and performances on a variety of shows including *Woman's Hour*,
In Tune, *Loose Ends* (all BBC); featured on *Marc Almond's Behind the Brel* (BBC Radio 2)

Theatre

Dublin Theatre Festival premiere (2011) – *The Lulu House* (with Lorcan Cranitch)
Royal Shakespeare Co– *The Rape of Lucrece* (new commission, with music co-written by Camille)
Sweeney Todd and *Tonight Lola Blau* (both Gate Theatre, Dublin)

Awards

Woman of the Year (Music)	Irish Tatler (2011)
Best Spiegeltent Show	Dublin Fringe
Spirit of the Fringe	Edinburgh Fringe
Best Music	Brighton Festival Awards
Best Music Artiste	Melbourne Green Room Theatre Awards

Nominations

Best Female Artist Award (Irish Meteor Awards 2009)

2011/12

2011 highlights include a solo performance in the **Royal Shakespeare Company** production of *The Rape of Lucrece* (for which she co-composed the music with long-term MD Feargal Murray), the full production of which will premiere at the **Edinburgh International Festival** in 2012.

Jan 2012 Showcase performance at **Under the Radar, New York** (supported by Culture Ireland)

August 2012 Release of **new studio album - Changeling**

Autumn 2012 Tours in UK, Australia, Germany

Special guest appearances include performances with

- Hal Willner, Tim Robbins, Todd Rundgren, Marianne Faithfull at Sydney Festival
- Les Nuits De Fourvière – *Tom Waits' Raindogs Revisited* – with St Vincent, Jane Birkin (inc Montreux Jazz Festival, Barbican London)
- Touring with Jools Holland's Big Band (inc Royal Albert Hall and SECC Glasgow)
- Sharon Shannon's Big Band (with Shane MacGowan) – Edinburgh, Manchester, London
- Martha Wainwright and Beth Orton in the *Way to Blue Nick Drake tribute* at Birmingham Town Hall and Barbican, London
- Marc Almond, Diamanda Galas and Arno in *Brel Tribute Show*, Barbican, London

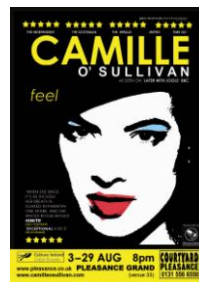
bittersweet, slightly twisted, darkly sexy and emotionally revealing... Australian Stage

Recent Performances include

Royal Festival Hall (London), 6 week run - **Apollo Theatre** (London West End), **Roundhouse** (London), **Queen Elizabeth Hall** (London), **Sydney Opera House** (sell out seasons 2008, 2009).
Festival appearances include **London Feis 2011** (headline (2nd Stage); main stage inc Bob Dylan, Van Morrison), **Edinburgh Fringe** (4 week runs), **Latitude** and **Glastonbury**.

We gave Camille five stars last year, after this performance we'd give her six if we could

★★★★★ Metro



Camille O'Sullivan Online

Website	www.camilleosullivan.com
YouTube	www.youtube.com/camilleosullivan
Myspace	www.myspace.com/camilleosullivan
Twitter	www.twitter.com/camilleos
Facebook (fan page)	www.facebook.com/#!/pages/Camille-OSullivan/14453614182

For more information please contact **Dave Clarke** at **Planet Earth Publicity**
Tel: 07966 557774 E: dave@planetearthpublicity.com